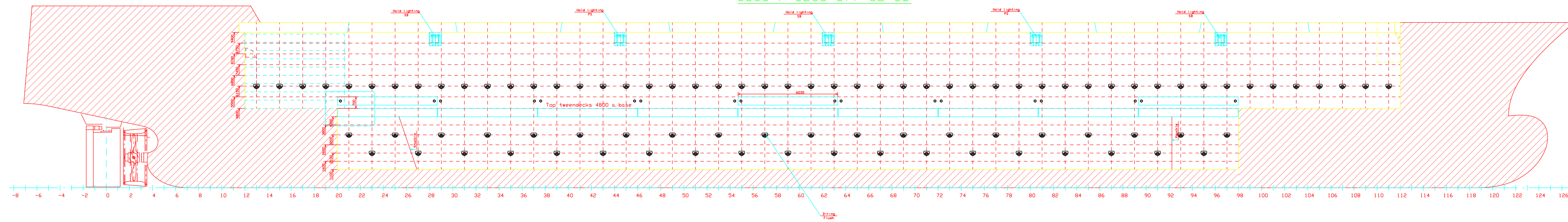
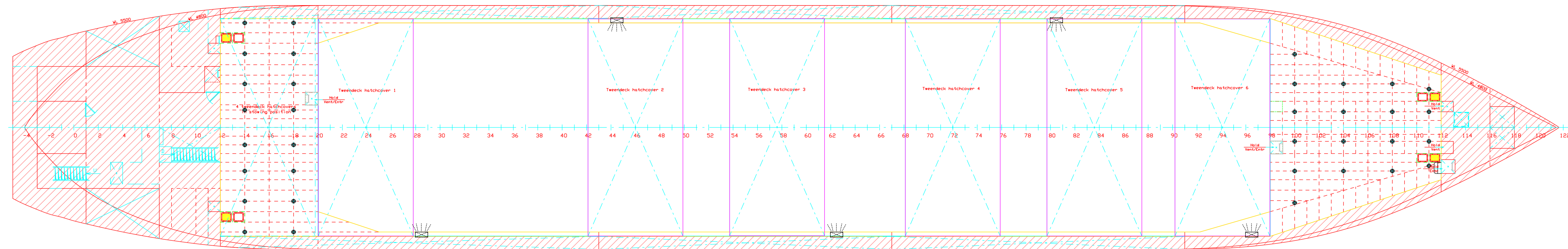


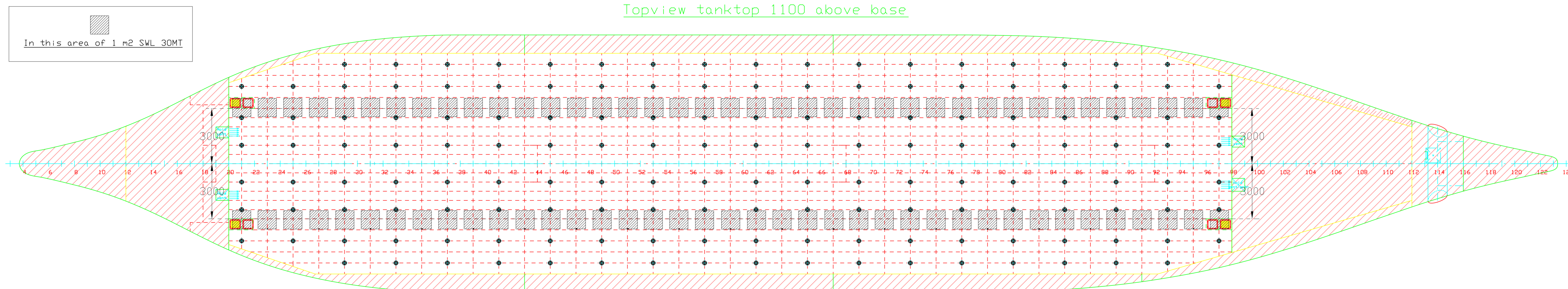
Sideview longitudinal bulkhead
6000 / 6250 off CL SB



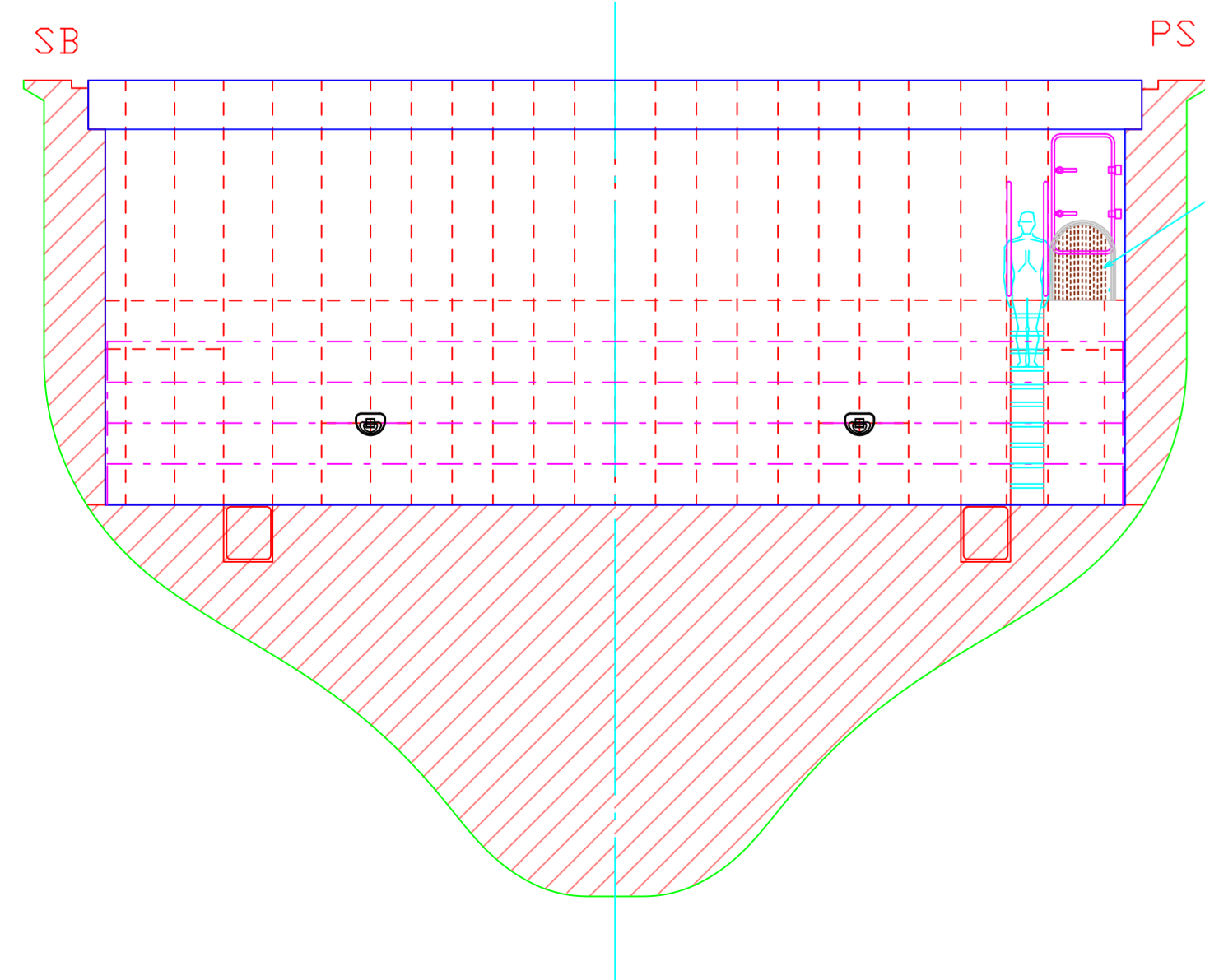
Topview maindeck 5500 AB



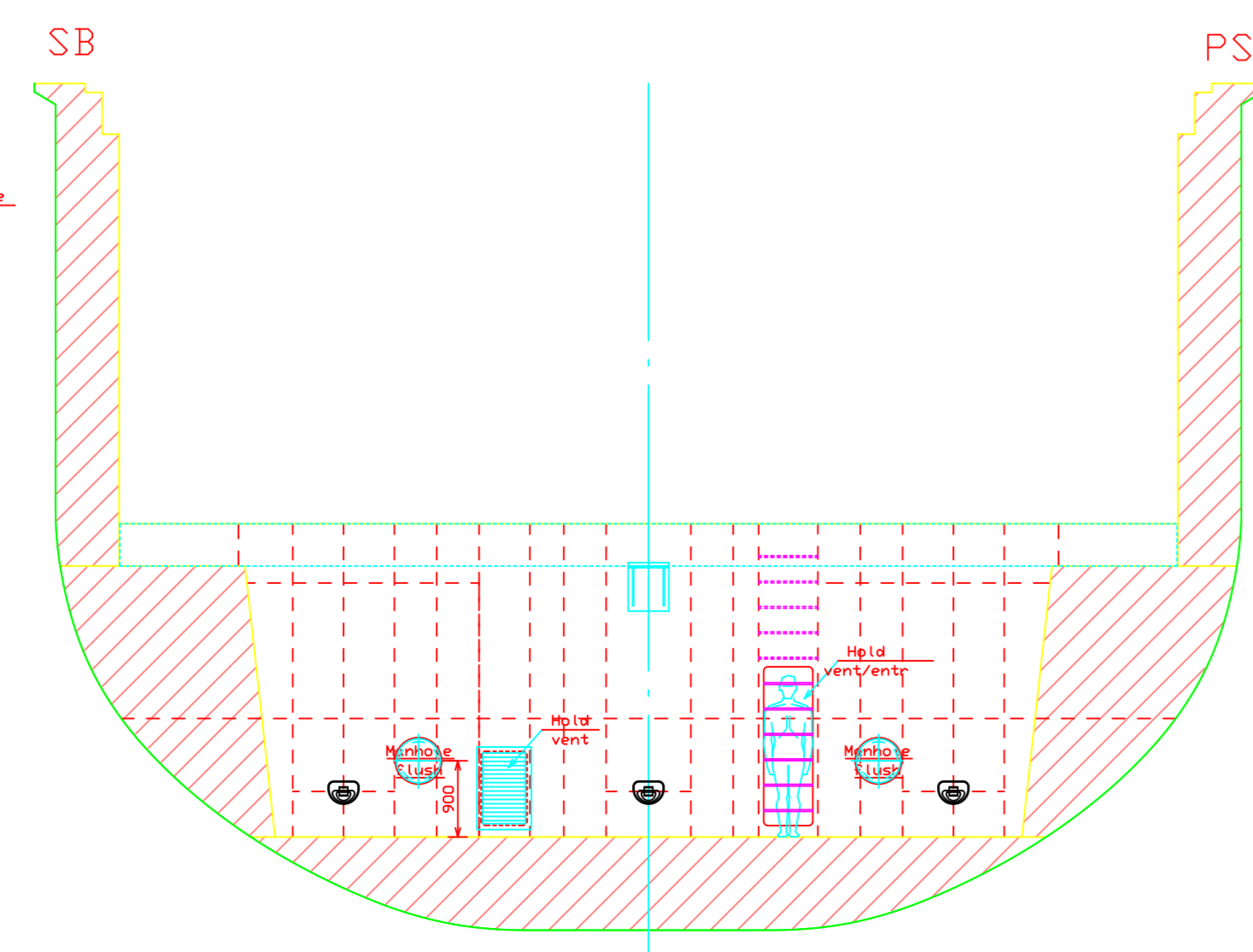
Topview tanktop 1100 above base



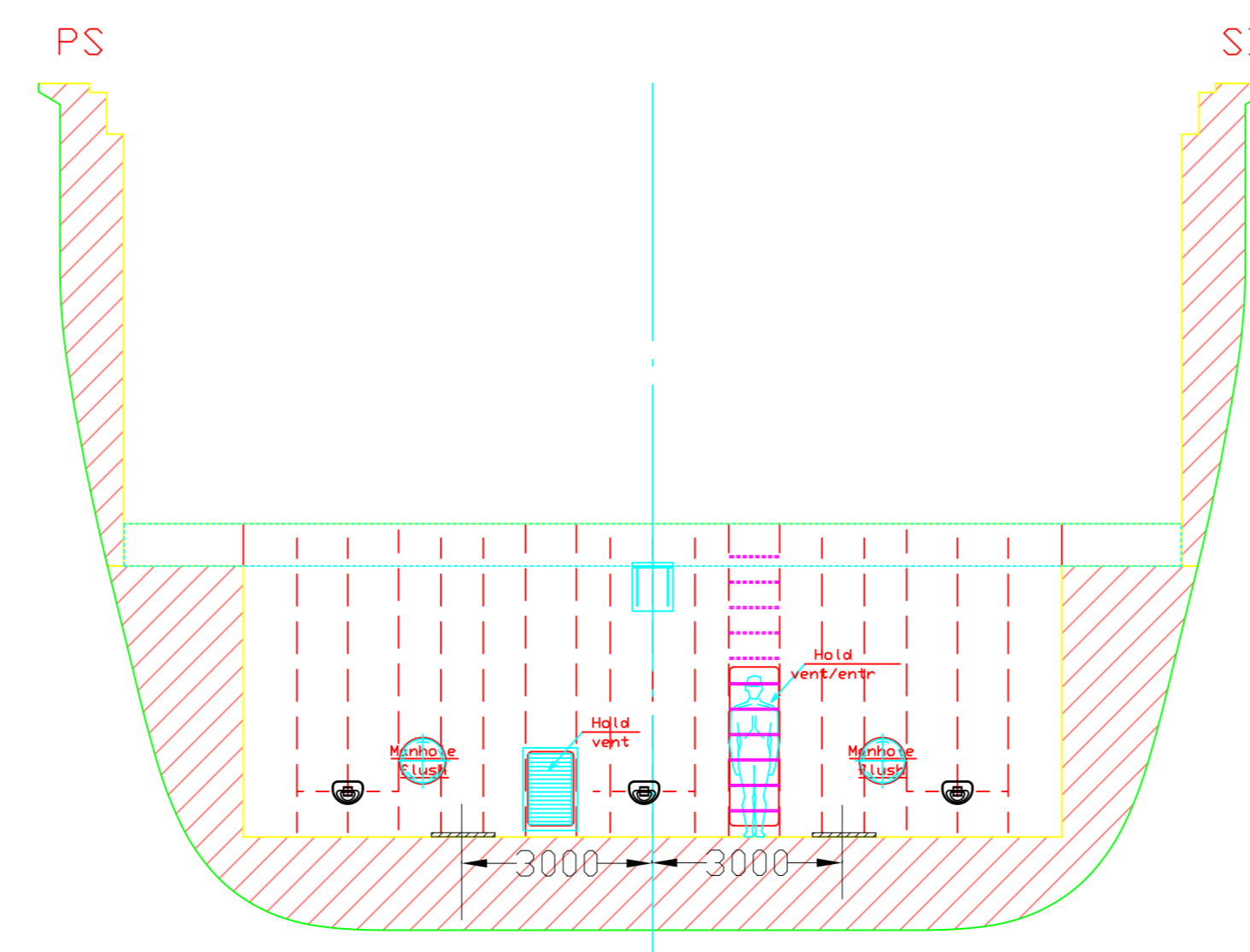
Crossview bulkhead fr. 12



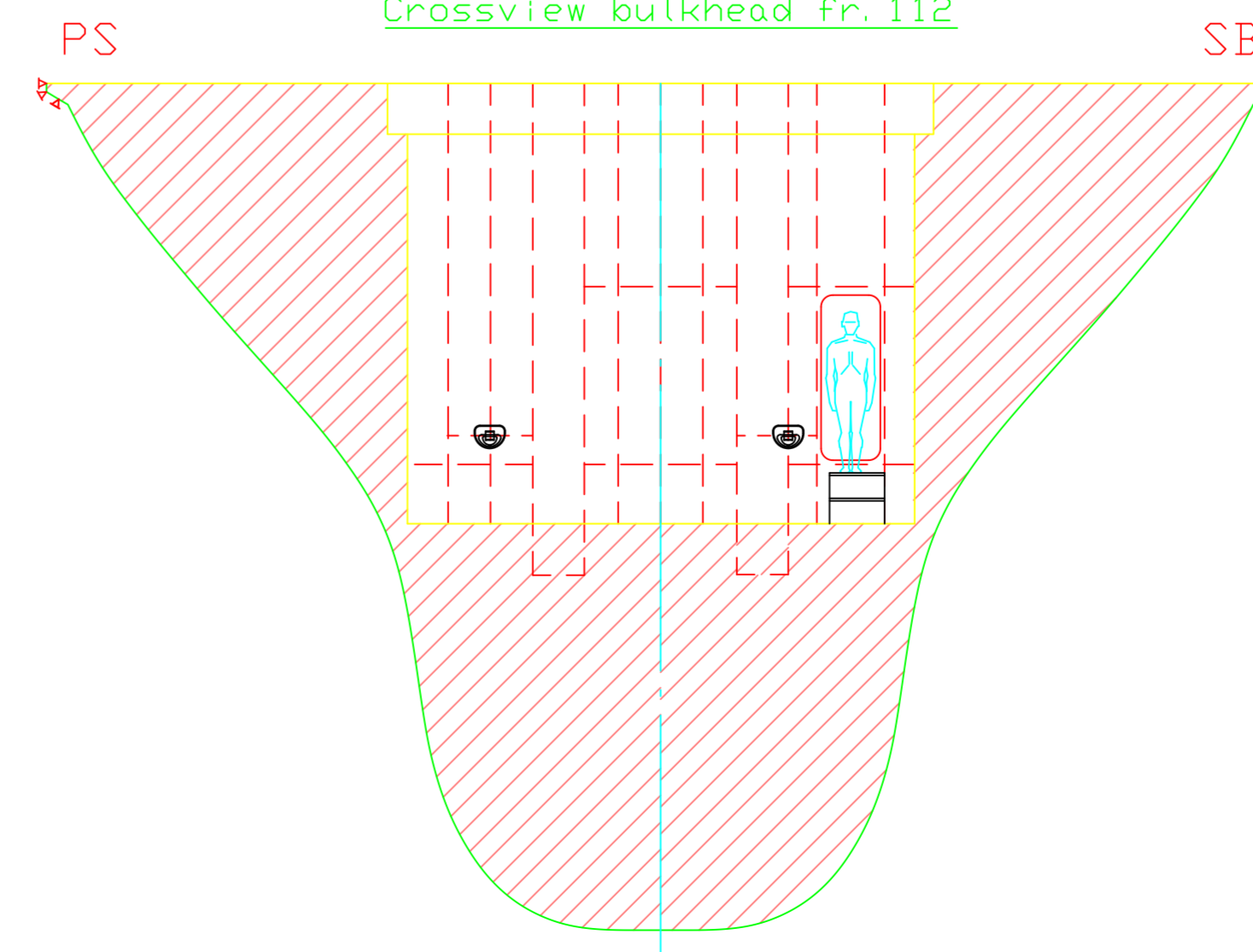
Crossview bulkhead fr. 20



Crossview bulkhead fr. 98



Crossview bulkhead fr. 112



VUYK ENGINEERING GRONINGEN B.V.

P.O. Box 204
6700 AE Groningen
1722 BK Groningen
The Netherlands

T: +31 (0)6 5763 860
F: +31 (0)6 5763 861
E: info@vuykeng.nl
W: www.vuykeng.nl

Naval architects, Marine engineers, Consultants

Hold arrangement

SCALE	1:25	OWNER	Global Seatrade BV	SH	A0
DRAWN	LD	YARD	Hartman Marine Shipbuilding B.V.	NO. OF P.	1
DATE	24-12-2010	B. No.	005	Rev.	0
CH		Proj.	VEG10.084	Draw	180-001
CH P. 1				Rev.	1

NOTICE: This drawing and the information it contains are the property of VUYK ENGINEERING GRONINGEN B.V. and may not be reproduced or used in part or in whole for any purpose, except by written permission of this company.