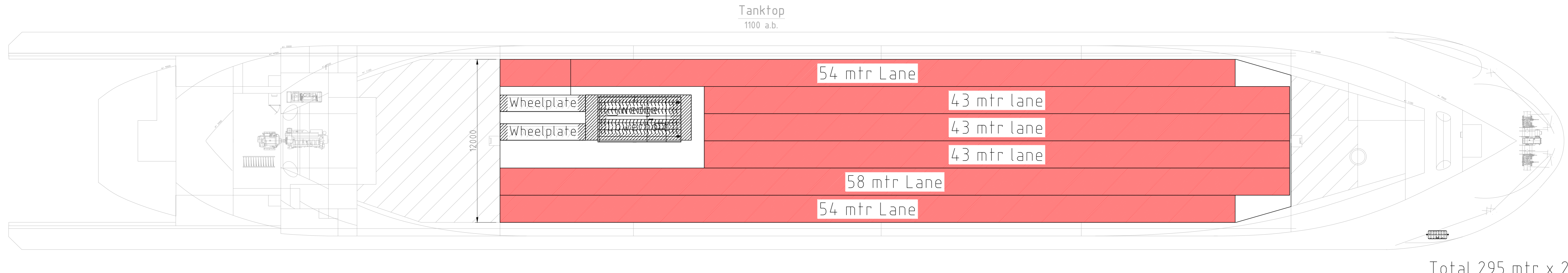
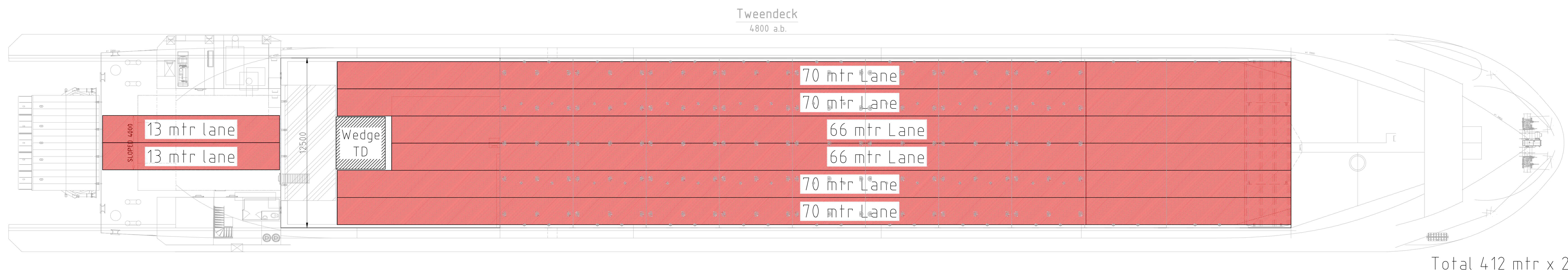
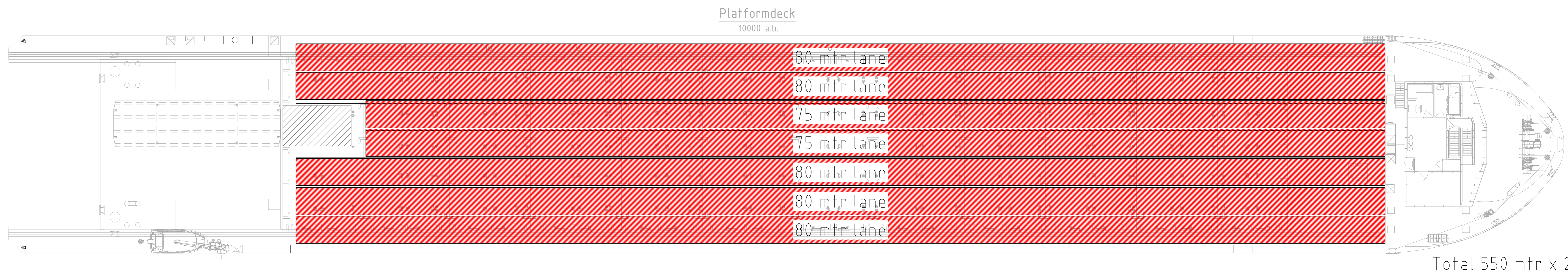
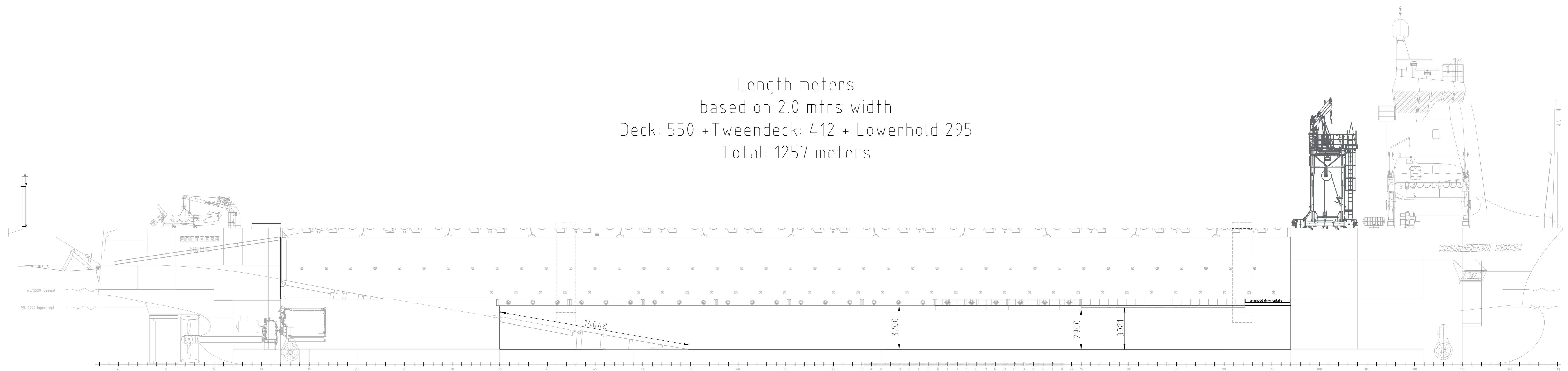
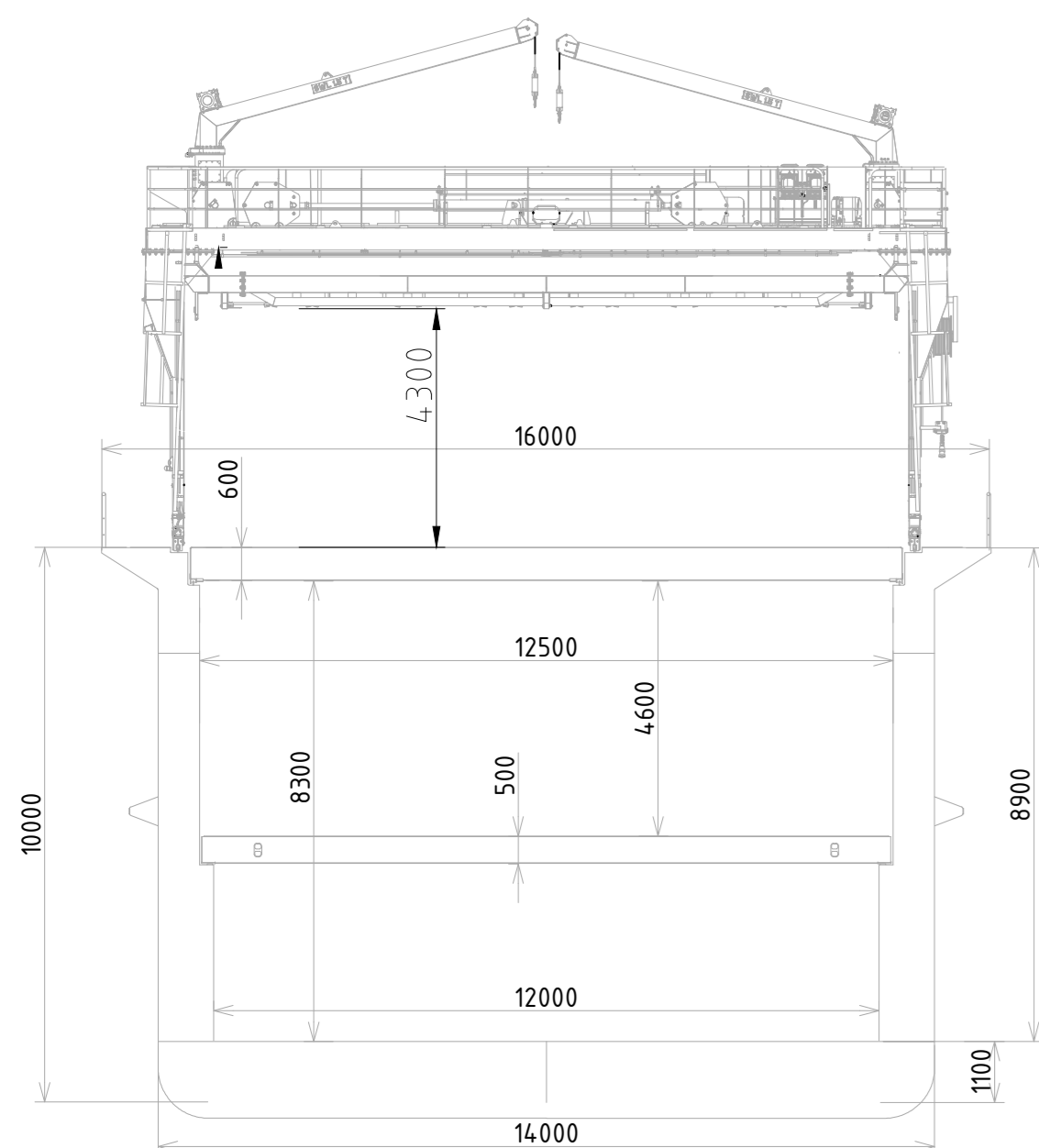
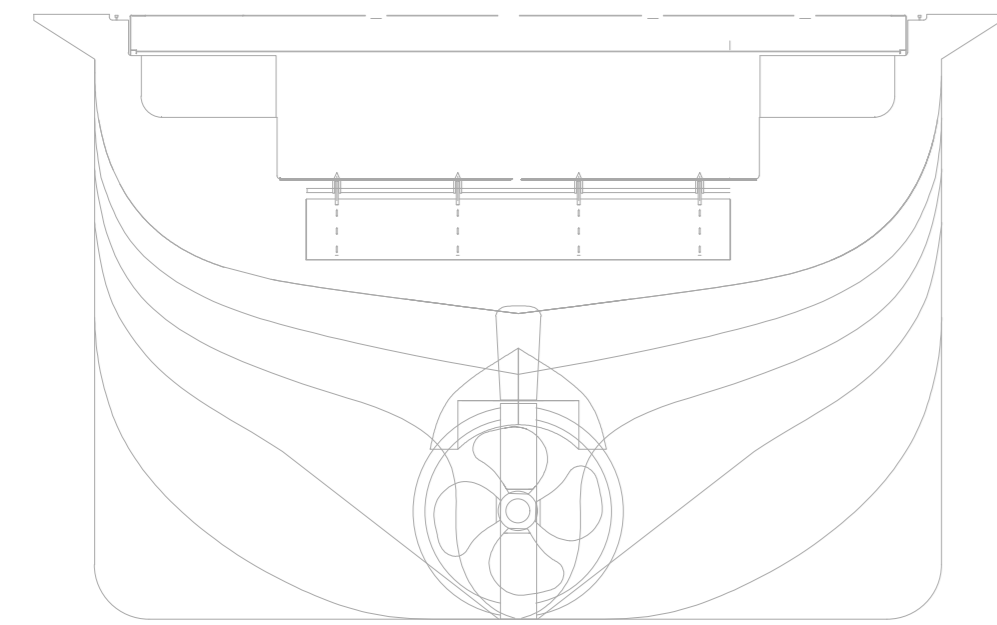


Length meters  
 based on 2.0 mtrs width  
 Deck: 550 + Tweendeck: 412 + Lowerhold 295  
 Total: 1257 meters



MAIN PARTICULARS - SOUTHERN ROCK	
Length over all	114.25 (m)
Length between perpendiculars	100.55 (m)
Breadth moulded	14.00 (m)
Depth Platformdeck	10.00 (m)
Draft (design)	5.52 (m)
Draft Open Top	4.20 (m)
CAPACITIES	
Hold	abt. 264718 (cbm)
Hold	abt. 7496 (m³)
Gas Oil	abt. 230 (m³)
Freshwater	abt. 90 (m³)
Ballastwater	abt. 2295 (m³)
Tonnage	3639 (GT)
MAXIMUM LOADS	
Tanktop lower hold	15 (mt/m²)
Tanktop upper hold	12 (mt/m²)
Tweendeck 500mm	2.5 (mt/m²)
Tweendeck 800mm	8.4 (mt/m²)
Hatchcovers	3.5 (mt/m²)
RORO CAPACITY	
Length of ramp	7.00 (m)
Width of ramp	7.00 (m)
Max. wheelload ramp and fixed deck area	2x 40mt/axle
Max. wheelload 800mm Tweendeck	2x 40mt/axle
Max. wheelload 500mm Tweendeck	2x 6mt/axle

Ships name:		Voyage nr:		Projectnumber:		Sheetnr:		DRAWN UP FOR THE BENEFIT OF THE CARGO INTERESTS AND/OR CHARTERER FOR THEIR RISK AND RESPONSIBILITY AND SUBJECT TO THE TERMS AND CONDITIONS OF THE CPA.	
Date:		Scale:	1:125	Loading ports:					
Revision nr and date:		Units:	mm	Discharging ports:					