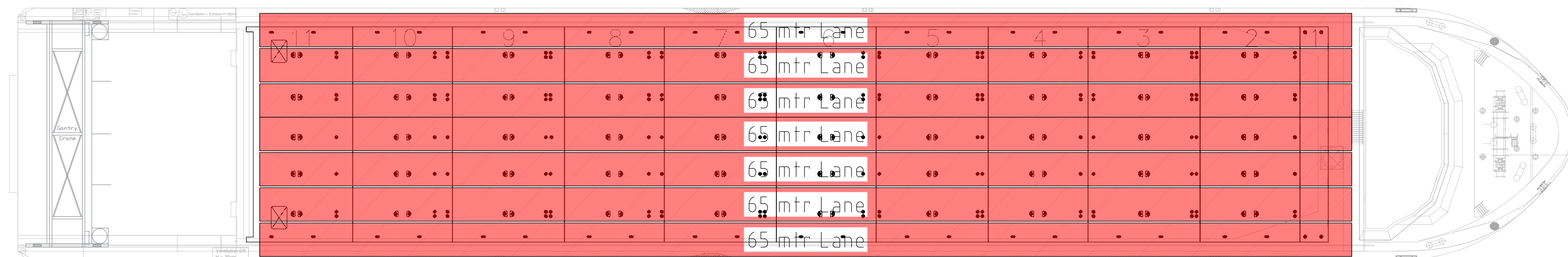
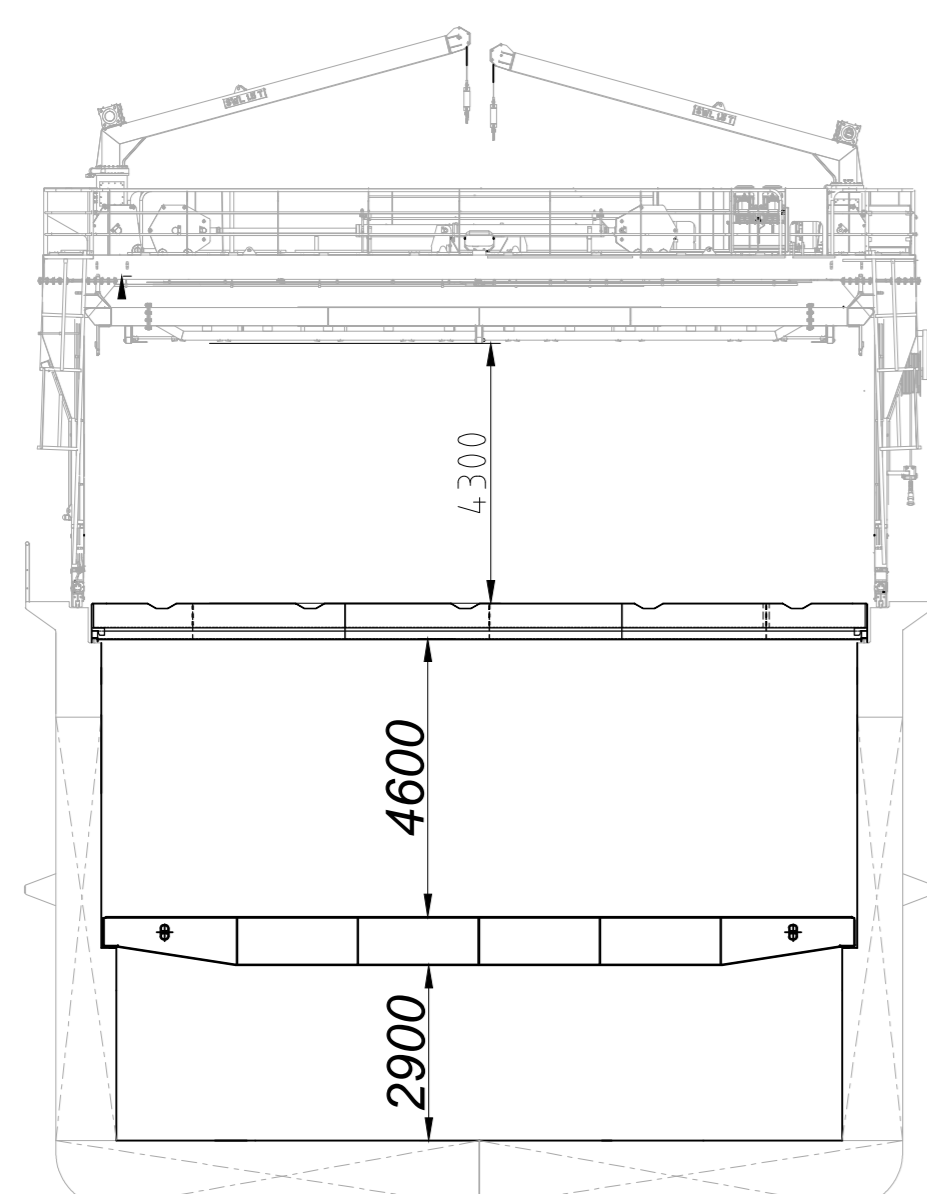
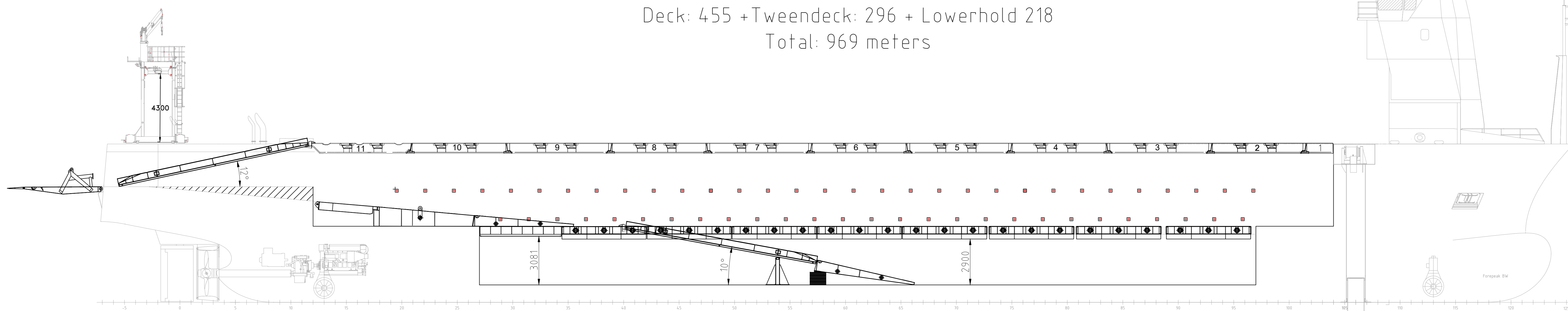
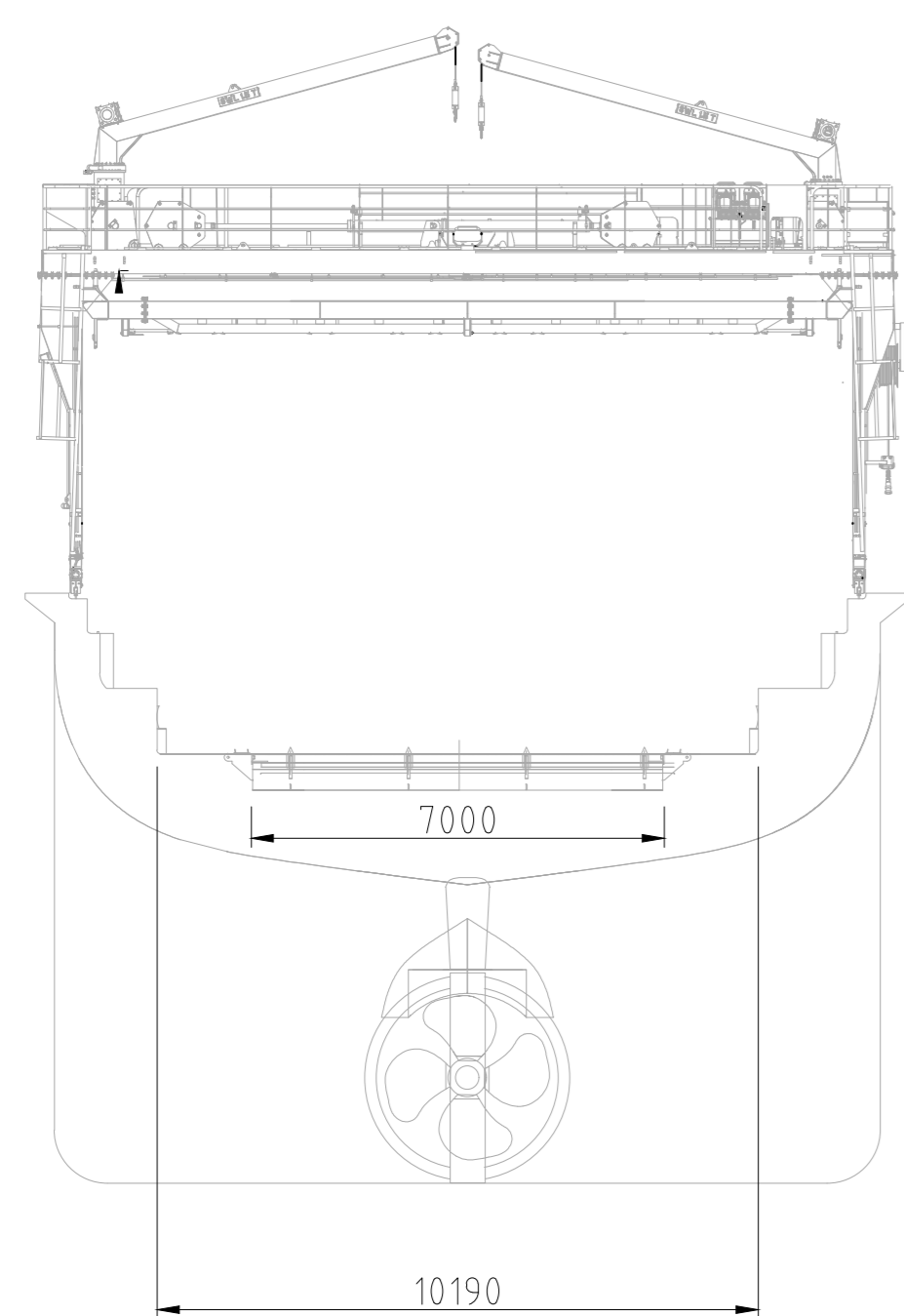
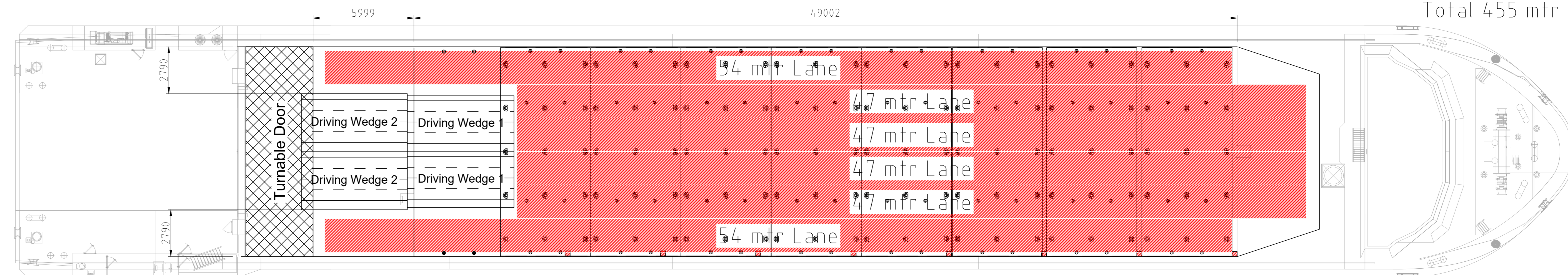


Length meters
 Based on 2.0 mtrs width
 Deck: 455 + Tweendeck: 296 + Lowerhold 218
 Total: 969 meters

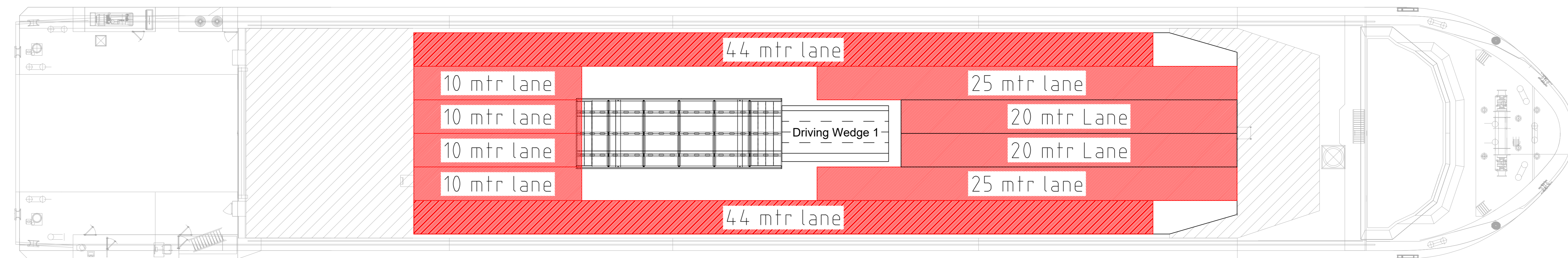


Total 455 mtr x 2.0 mtr





Total 296 mtr x 2.0 mtr

note: 30cm between each tweendeck



Total 218 mtr x 2.0 mtr

MAIN PARTICULARS	
Length over all	92.90 (m)
Length between perpendiculars	84.99 (m)
Breadth moulded	14.00 (m)
Depth Platformdeck	10.00 (m)
Draft (design)	5.00 (m)
Draft Open Top	4.50 (m)
Length of spudpole	14.50 (m)
CAPACITIES	
Hold	abt. 227642 (cbm)
Oil	abt. 6276 (m³)
Gas Oil	abt. 230 (m³)
Freshwater	abt. 90 (m³)
Ballastwater	abt. 1995 (m³)
Tonnage	2994 (GRT)
MAXIMUM LOADS	
Tanktop	5 (MT/m²)
Tweendecks	5 (MT/m²)
Tweendecks supported by pillar	8 (MT/m²)
Matchcovers	35 (MT/m²)
RORO CAPACITY	
Length of ramp	6.00 (m)
Width of ramp	7.00 (m)
Max. Axle load ramp/tweendecks	2x 40 (MT)

Ships name:		Voyage nr:		Projectnumber:		Sheetnumber:		DRAWN UP FOR THE BENEFIT OF THE CARGO INTERESTS AND/OR CHARTERER FOR THEIR RISK AND RESPONSIBILITY AND SUBJECT TO THE TERMS AND CONDITIONS OF THE CPA.	 	
Date:	Scale:	1:125		Loading ports:						
Revision nr and date:		Units:	mm		Discharging ports:					